

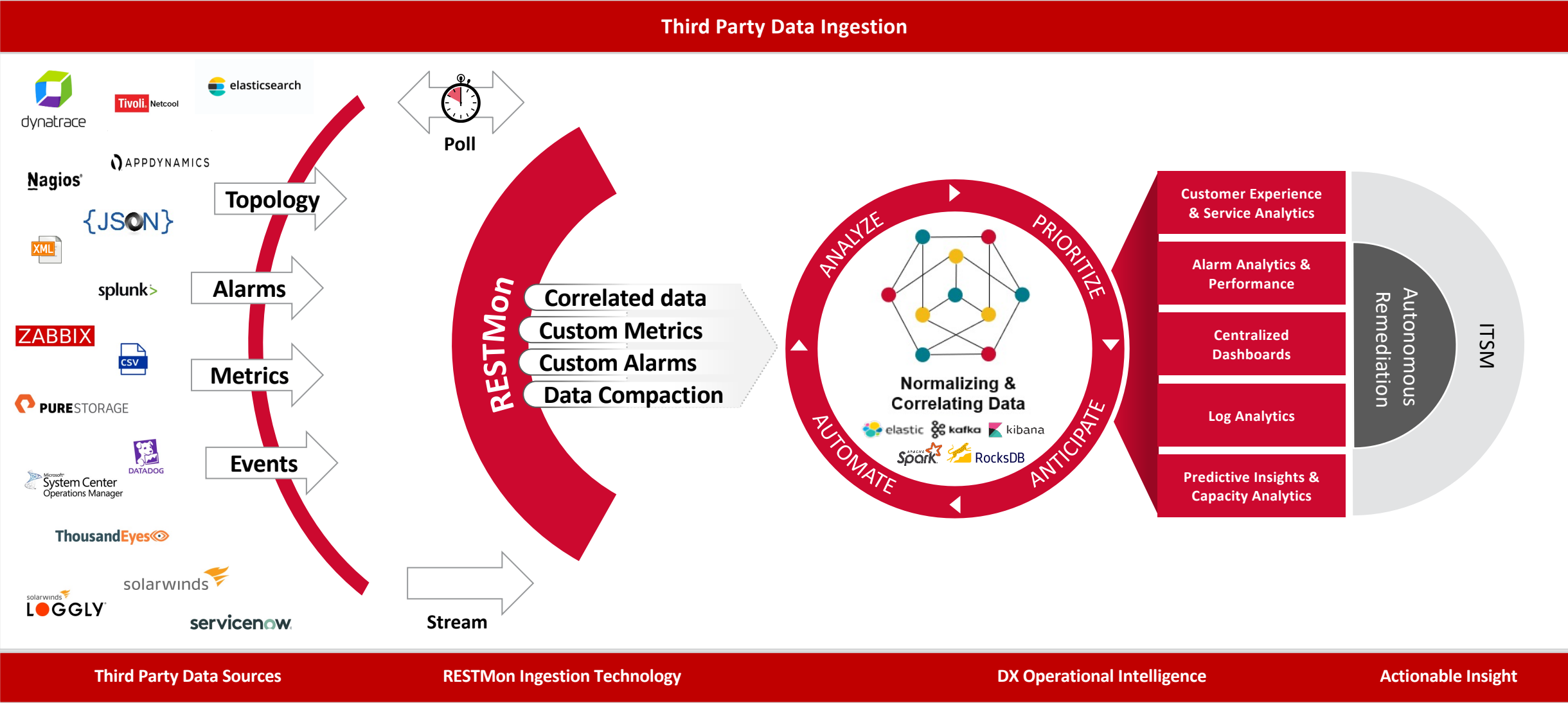
RESTMon 2.1

What's New

July 2021

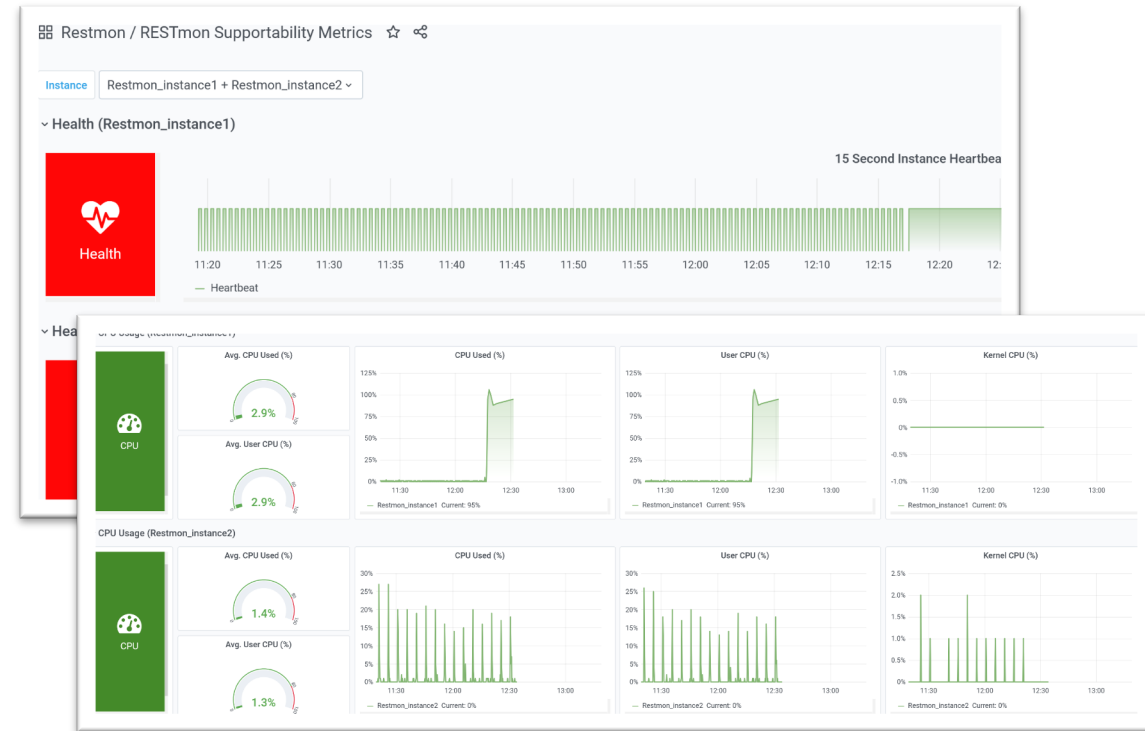


3rd Party Data Ingestion with RESTMon



RESTMon 2.1: What's New

- Monitor RESTMon performance & health via OTB DX Dashboard
- Improved availability with Liveness & Readiness probes
- New OTB (Reference) Integrations
 - New Relic
 - Zabbix
 - Netcool
 - Google Cloud Monitoring
 - AppNeta
 - MongoDB
 - Dell ECS
- [RESTMon 101 Training](#)
- [Schema Development Guide](#)
- [Improved Product Documentation](#)



Tivoli software



Stackdriver

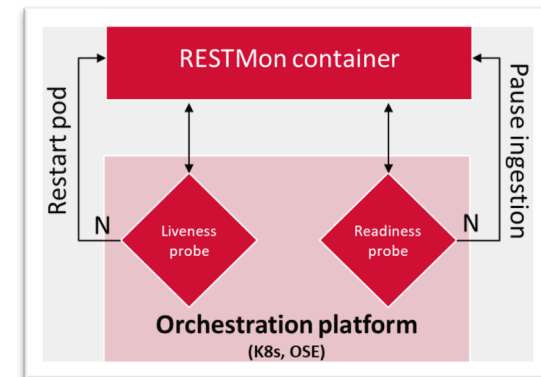
ScienceLogic



AppNeta



ZABBIX



Monitor RESTMon via DX Dashboards

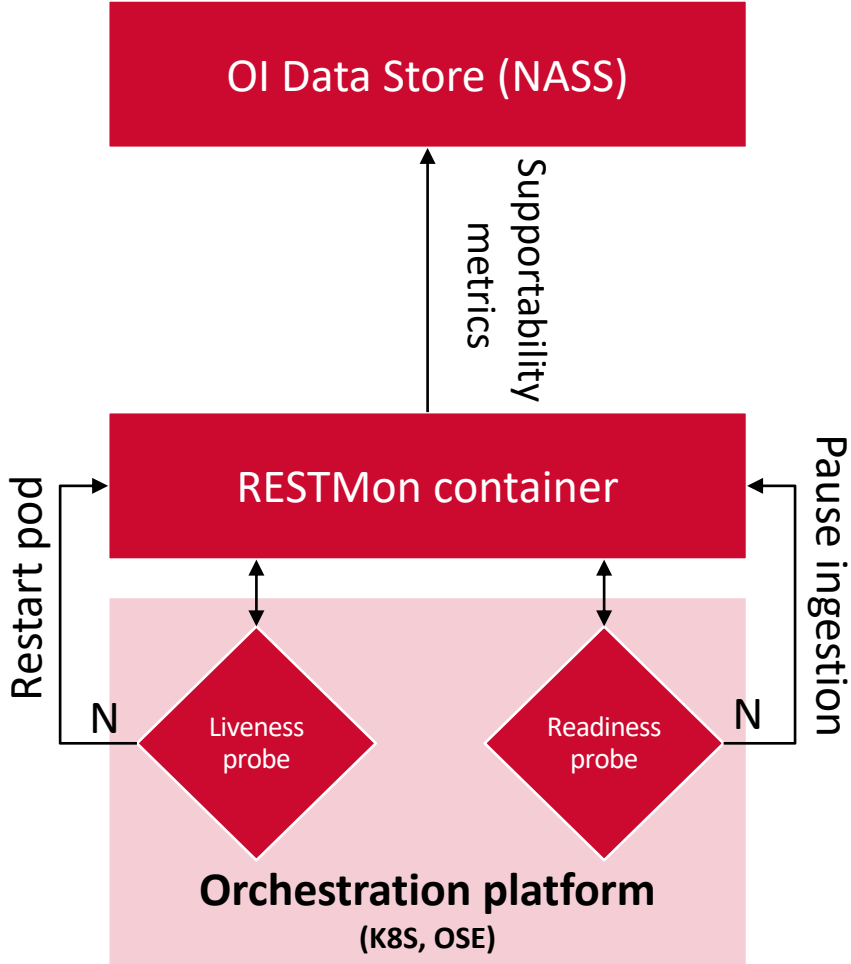
- Centrally monitor all RESTMon instances
 - RESTMon: Monitoring Overview:** Single dashboard to monitor all RESTMon instances
 - 3 additional dashboards for in-depth view & analysis
 - RESTMon: Data Collector
 - RESTMon: Publisher
 - RESTMon: Datastor
- Dashboards are enabled by 49 metrics
 - RESTMon publishes health metrics to OI
 - Key metrics include: Heartbeat, Memory, CPU, Traffic & Latency



Liveness & Readiness

- Improved availability with Liveness & Readiness probes
 - Works OTB on orchestration platforms such as Kubernetes & OSE
- New APIs to report Liveness & Readiness
 - Initiated action is controlled by Kubernetes
 - Option available to disable Readiness
 - APIs can be leveraged for Auto-restart & Auto-pause

LIVENESS	READINESS
A liveness probe checks if the container in which it is configured is still running. If the liveness probe fails, the <i>kubelet</i> kills the container, which will be subjected to its restart policy	A readiness probe determines if a container is ready to service requests. If the readiness probe fails a container, the endpoints controller ensures the container has its IP address removed from the endpoints of all services. A readiness probe can be used to signal to the endpoints controller that even though a container is running, it should not receive any traffic from a proxy.
WHEN: <ol style="list-style-type: none"> Un-responsive e.g. out of memory Unable to publish data for defined time interval e.g. >10 mins (configurable) 	WHEN: <ol style="list-style-type: none"> Max queue size reached OI endpoint is unavailable Number of profiles > 5
DO: <ol style="list-style-type: none"> Auto pod restart using pod orchestrator 	DO: <ol style="list-style-type: none"> Traffic routing to the application is stopped Resume ingestion when Readiness is 'Y'



New Reference Integrations

New Relic

- For: New Relic SaaS
- Type: Polling
- Data type: Application & Infrastructure monitoring data
 - Metrics, Alarms, Topology
- Schema supports all API types in New Relic
 - Nerdgraph (GraphQL) - Infra and APM
 - Query API - Infra
 - Alerts API
 - REST API (v2) - APM and Alerts

Zabbix (Webhook)

- For: Zabbix
- Type: Streaming (webhook)
- Data type: Alarms
- Supports following config in Zabbix
 - Event_id
 - Event_name
 - Event_severit
 - Host ip
 - Host_name

Netcool

- For: Netcool (Omnibus 8.1.0)
- Type: Streaming & Polling via different schemas
- Data type: Alarms
 - Netcool pushes data to RESTMon OR
 - RESTMon polls Netcool for Alarms

Google Cloud Monitoring

- For: Google Cloud Monitoring (Stackdriver) SaaS
- Type: Streaming(webhook)
- Data Type: Alarms & Topology
- Metric ingestion not supported

New Reference Integrations

AppNeta

- For: AppNeta SaaS
- Type: Streaming
- Data type: Alarms
- Convert Events to Alarms using rules in schema
- Monitor network paths in OI

MongoDB

- For: MongoDB Cloud Manager
- Type: Polling
- Data type: Alarms & Topology
- No Severity mapping as MongoDB Alerts do not have severity
- Derives Alarms message in schema

Dell ECS

- For: Dell ECS 3.3
- Type: Polling
- Data type: Topology , Metrics & Alarms
- Monitor ECS (storage)
- Ingest Cluster & Nodes and Performance & Storage metrics

Product Resources

- [RESTMon 101 Training](#)
 - Getting started & basics on 3rd party integration with DX OI
- [Schema Development Guide](#)
- [Product Documentation](#)
- [Blog](#)
- [Datasheet](#)



BROADCOM[®]

connecting everything[®]