

RALLY[®] + SCALED AGILE FRAMEWORK[®] – CORE VALUES

The four core values of **alignment**, **built-in quality**, **transparency** and **program execution** represent the fundamental beliefs that are key to the effectiveness of the Scaled Agile Framework[®]. Purpose-built to scale agile across the largest enterprise, Rally supports all four core values in multiple ways.



ALIGNMENT



**BUILT-IN
QUALITY**



TRANSPARENCY



**PROGRAM
EXECUTION**

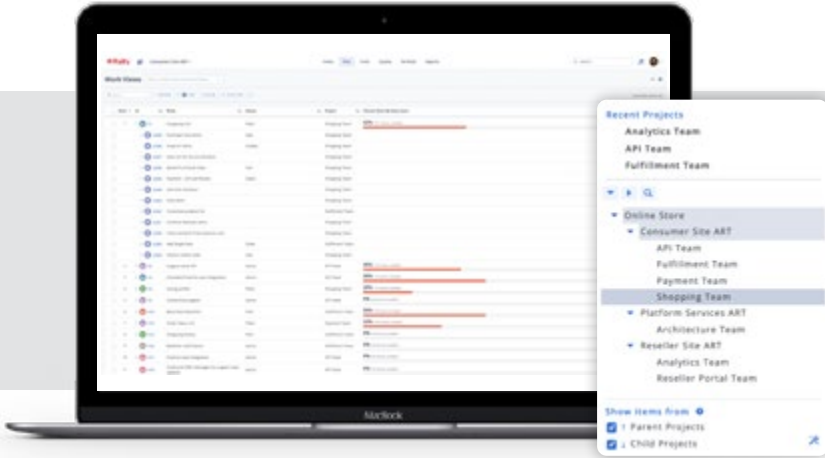
Learn more at:

[broadcom.com/products/software/
agile-development/
rally-software](https://broadcom.com/products/software/agile-development/rally-software)

➤ Alignment

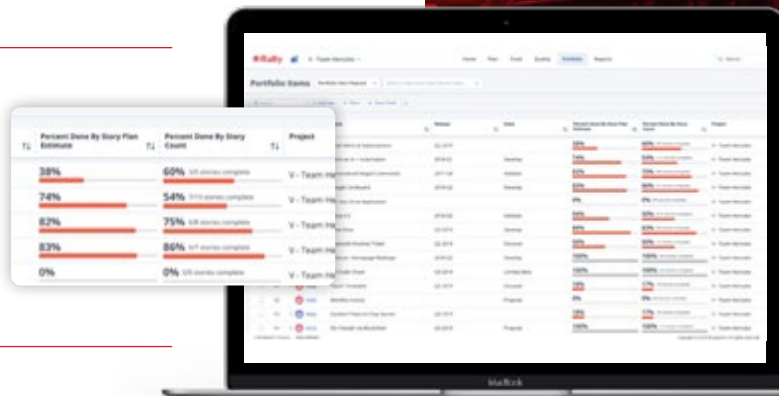
CONNECT STRATEGY TO EXECUTION

Ensure development teams are working on the highest priority work by aligning work to business initiatives to reduce waste and give purpose to the work the teams are completing.

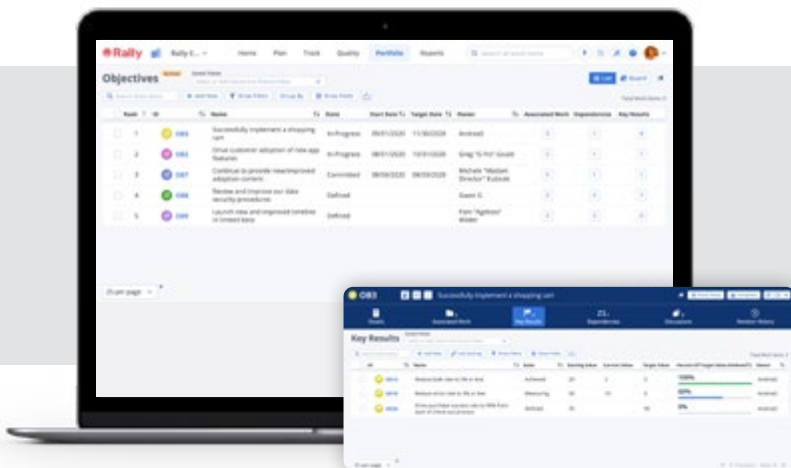


Model your organization so that you can tie strategic initiatives to agile team execution. Set up your organizational hierarchy to show teams, agile release trains, solution trains and value streams.

With Project and Portfolio Hierarchy, you can have deep visibility into the work that your teams are doing and see how it ties to your business strategy and customer value.



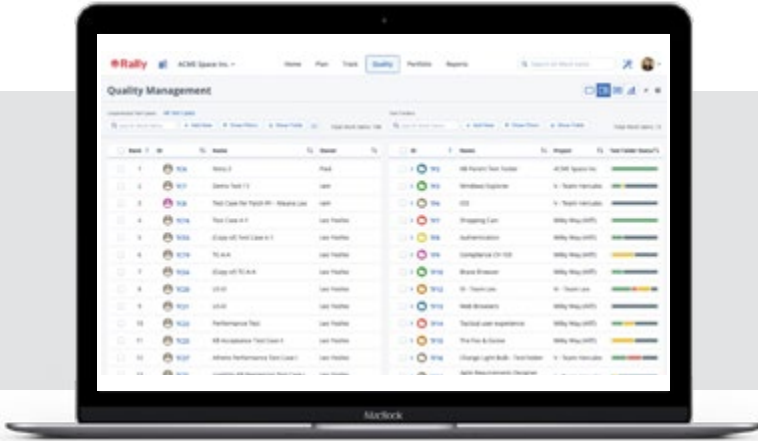
Align your organization, people and work to real business outcomes so you can confidently move forward with purpose. Plan, execute and measure all your work against the objectives that matter.



➤ Built-in Quality

GUIDE TO CONTINUOUS IMPROVEMENT

Improve team productivity and predictability with guidance aligned to agile best practices. Monitor the performance of agile development teams to address issues before they become a problem.



Manage quality by creating and managing recurring regression tests, custom test plans and more. Integrate with automation tools and map test results for full traceability and auditability.

Analyze work-in-progress and delivery trends while identifying bottlenecks in your process so they can be addressed quickly to increase efficiency.

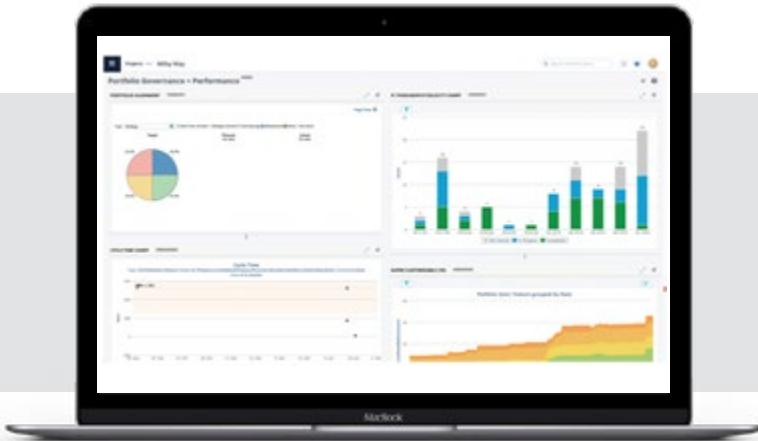


Measure team performance -- both improvements and degradations -- over time and understand how new practices are affecting team productivity, predictability, responsiveness and quality.

➤ Transparency

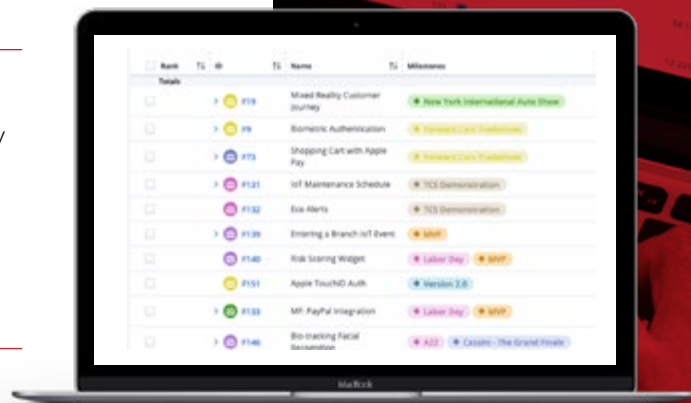
INFORMATION TO GUIDE CRITICAL DECISIONS

Have data at your fingertips to make informed decisions at all levels of the organization, from C-Level to development teams. Instantly understand the impact of these decisions as the data is updated across the organization in real-time.

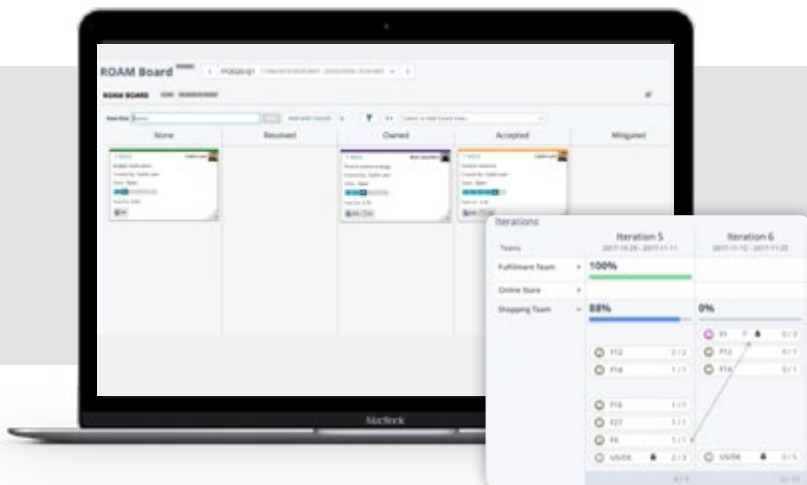


Create and share custom dashboards and reports that display information from across the organization that is most important to you. Use the information to guide informed, data driven decisions.

Understand and guide scope with functionality that shows actual progress against plan dates and upcoming milestones so that you are can have informed discussions about status, expectations and steering.



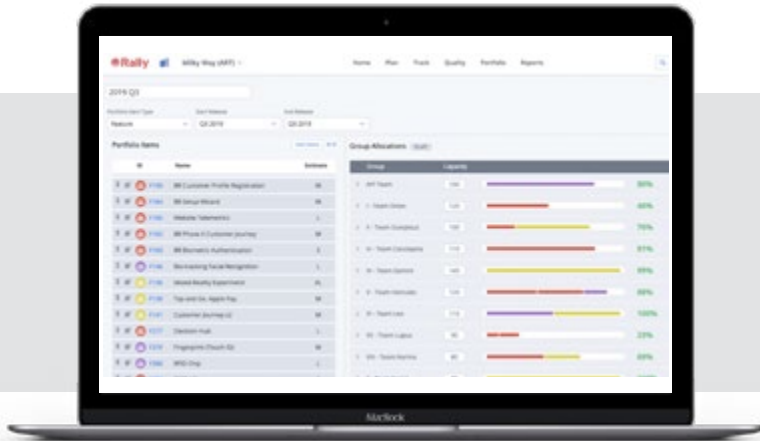
Ensure that risks and dependencies are visible and accounted for both in the planning and execution phases of the product development lifecycle. Track the progress over time to ensure the proper steps are taken for resolution.



➤ Program Execution

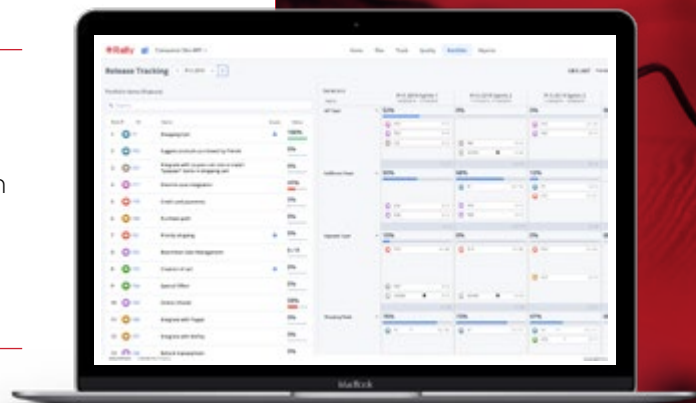
PREDICTABILITY AND VISIBILITY AT SCALE

Create realistic plans and track their execution with real-time information about changes including scope growth, new risks and dependencies. Leverage this data to make informed decisions and trade-offs to ensure you are delivering the right value to your customers at the right time.



Prioritize business needs with the work capacity of agile teams. Ensure that teams plan the right set of work for the upcoming program increments and have the capacity to realistically achieve the plan.

Track the status of teams and work throughout a release. Monitor the rate at which work is completed, added or removed to maintain scope and the probability of success.



Empower teams to create predictable plans by viewing the team's velocity against that of the work items in a given iteration. During execution, clearly see the team's progress against iteration goals and commitments.

